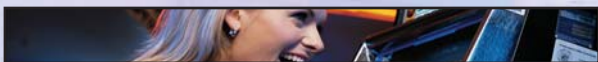


FREE TRANSPORTATION

LACROSSE & WINONA AREA ROUTE

	Mon.-Fri. am Route	Mon.-Sat. pm Route	Sunday
Onalaska Woodman's Grocery Store	8:45am	3:45pm	12:00pm
Winona Main & Bellview	9:20am	4:20pm	12:40pm
Kellogg Kwik Trip	9:55am	4:55pm	1:10pm
Wabasha Kwik Trip	10:00am	5:00pm	1:15pm
Lake City Conoco	10:15am	5:15pm	1:30pm
Frontenac Whistle Stop (Reservations required)	10:25am	5:25pm	1:40pm
St. James Hotel (Red Wing, Reservations required)	10:40am	5:40pm	1:55pm
Arrive Treasure Island	11:00am	6:00pm	2:15pm
Leave Treasure Island	3:30pm	10:30pm	7:00pm

For reservations call: 1-800-222-7077 ext. 2594
8am - 6pm Monday - Friday



RESTAURANT HOURS

ISLAND PERK

Sunday - Thursday 7am - 10pm
Friday & Saturday 7am - Midnight

MONGO BAY GRILL

Open 24 Hours

PRIME THYME

Friday & Saturday 4pm - Midnight

JAVA'S

Sunday - Thursday 7am - Midnight
Friday & Saturday 7am - 3am

TRADEWINDS BUFFET

Brunch Saturday & Sunday . . 9am - 2pm
Lunch Monday - Friday 11am - 2pm
Dinner Sunday - Wednesday . 4pm - 10pm
Seafood Thursday 4pm - 10pm
Prime Rib Friday & Saturday . 4pm - 11pm



www.treasureislandcasino.com